

Warwick House Medical Practice

Quarterly Newsletter

www.warwickhouse.org.uk



Providing NHS services

@warwick.house.medical

Opening Hours

Monday	08.00-18.30
Tuesday	08.00-18.30
Wednesday	08.00-18.30
Thursday	08.00-18.30
Friday	08.00-18.30
Sat, Sun & Bank Holidays	Closed

Please note: 08.00 - 08.30 is for urgent issues only - under normal circumstances, the surgery is open Monday - Friday: 08.30 - 18.30.

Farewell to Dr Perry

We are sad to be saying goodbye to Dr Andrew Perry in February who is taking his well deserved retirement after 33 years. We wish him a happy and healthy retirement and thank him for his hard work and dedication through the years.

A few words from Dr Perry:



'There comes a time to retire and my time is next February. I have been a GP at Warwick House for 33 years. I have seen a lot of changes in this time. Initially, we were not at all computerised except for prescriptions so that has been a major change and continues to evolve; I have developed my interest in computers over the years.

I have had brief forays into management but mostly prefer just seeing the patients (it has to be done!), or fixing computers.

Over the years, we have always worked very well as a team and this has reflected in the care we have been able to provide our patients. I am happy to be leaving the practice in a good place.

Thank you to everyone I have worked with and patients I have seen. It has been great.'

We are pleased to announce that Dr Helen Hampson will be joining our team in March and taking on the majority of patients who are currently on Dr Perry's list. Please be assured that you can still see any of our clinicians here at the surgery. Dr Hampson's working days will be Monday, Thursday, Friday.

Dr Amit Patel will also be doing 1 morning a week here from 1st March. He is an experienced GP and we look forward to his support within our team.

What we do during half day closures

In our upcoming half day closures we have fire safety training.

During our closures we also have clinical and admin meetings.

Somerset NHS Charity is the official charity for NHS Services across Somerset. If you or a family member have been treated by this GP surgery and would like to help us make a difference for patients, please get in touch.

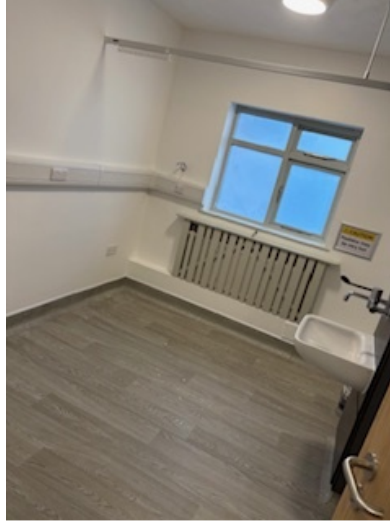


**Somerset
NHS Charity**

For more information, please visit:
<https://www.somersetnhscharity.org.uk/>

Practice Improvements

We are pleased to update that our new clinical room is almost complete and ready to be used in the near future. This has been paid for using the funding received from the Dept of Health & Social Care.



This means that all patients now wait in the main reception waiting area. Thank you for your patience during the disturbances.

We are also having a maple tree removed from the site due to subsidence issues. We do not expect this to cause any disruption to patients.

Patient Participation Group (PPG)

During our recent PPG meeting, our members were delivered a presentation on the Getubetter app. This is a self-help app for musculoskeletal issues.

They were also asked how they felt about having an electronic call system again.

If you would be interested in being a member of our group, we would love to hear from you. Please call or email our reception team to express an interest.
somicb.reception-warwickhousemc@nhs.net



CQC Report

The practice underwent routine CQC inspection in June 2025. The report was published in Sept 2025. We are very happy to have been given a 'Good' rating in all areas. Please take the time to read this to see all the good work we are doing

The full report is available at www.cqc.org.uk

Has your child had chickenpox?

Please let us know if your child has had chickenpox and their date of birth is on or after 01/01/2020

This is so that our records are accurate when we recall patients who are eligible for the MMRV (measles, mumps, rubella & varicella [chickenpox] vaccine) catch up clinic towards the end of the year. For more info, please visit the NHS UK website and search MMRV

Symphony wide updates

For organisational wide updates, please see our Symphony quarterly newsletter:

[Symphony Newsletter Q3 25/26](#)

(this can be found on the news page of the Symphony website)

Useful Numbers

Warwick House 01823 282147

Boots Upper Holway Road 01823 284529

Musgrove Park Hospital 01823 333444

Between October and December 2025, over **1149** patients provided us with feedback and over **88%** were **positive** about our services!



Please continue to complete the NHS Friends and Family Test to provide us with information about your experience to help us learn and improve upon the services we provide to you. Taking the Friends and Family Test is anonymous. Thank you.